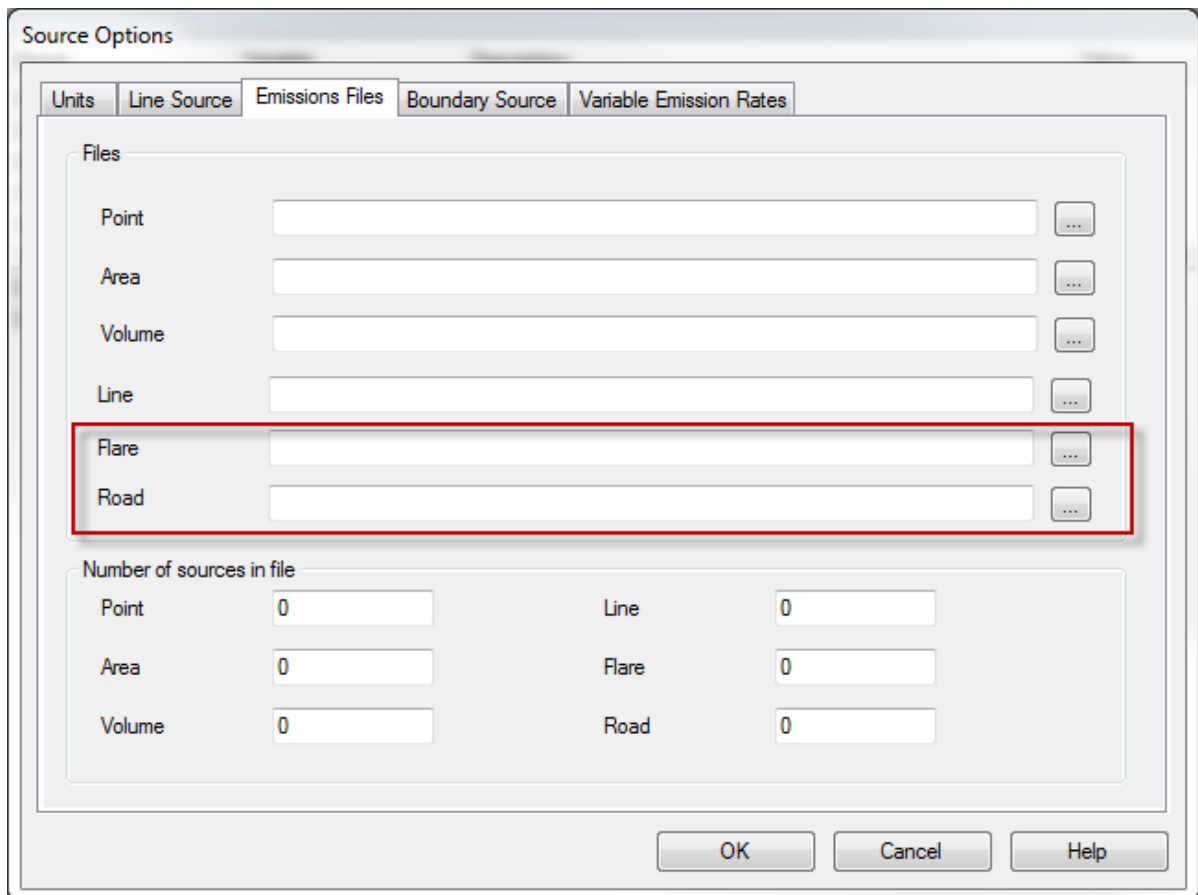
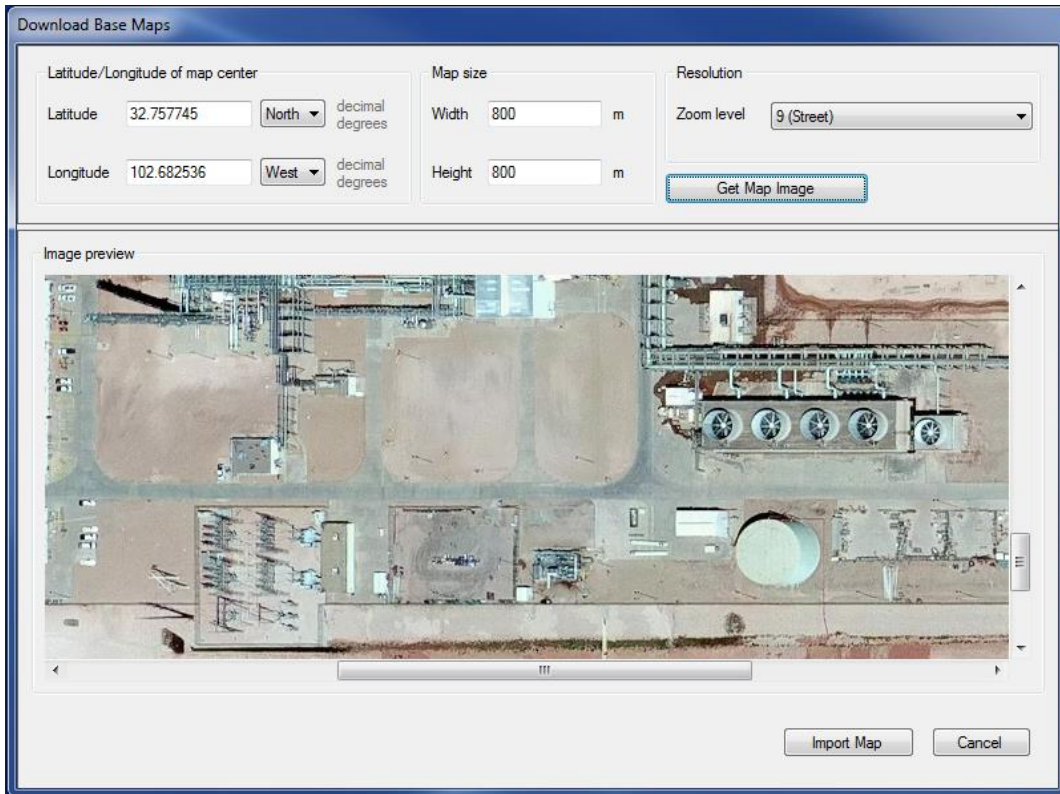


What's New in BREEZE CALPUFF Version 3.0

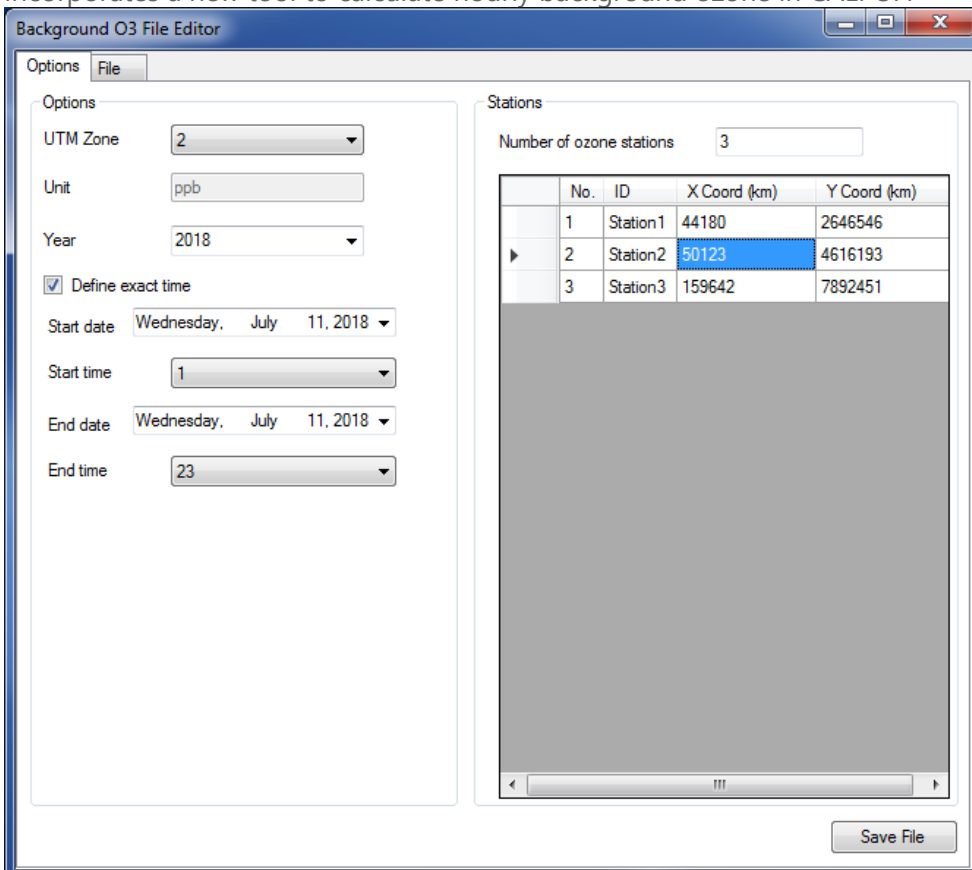
- Incorporates Exponent's latest versions of the CALPUFF modeling system:
 - CALPUFF Version 7.2.1
 - CALMET Version 6.5.0
 - CALPOST Version 7.1.0
 - Related processors
- CALPUFF Version 7, which is incorporated in this latest version of BREEZE CALPUFF, introduces new source types such as roadways and flares



- Enables the option to download high-resolution base maps for any location around the world, which can assure proper setup of model objects in the study domain and enhance graphical visualization



- Incorporates a new tool to calculate hourly background ozone in CALPUFF



- Incorporates a new tool to create and/or edit background files in CALPOST

Background File Editor

File Edit Help

Units: ug/m3,ug/m2/

Year: 2017

Buttons: Create Data, Clear

Year	Month	Day	Hour	Concentration
2017	1	1	0	0.233
2017	1	1	1	0.325
2017	1	1	2	0.325
2017	1	1	3	0.679
2017	1	1	4	0.679
2017	1	1	5	0.679
2017	1	1	6	0.679
2017	1	1	7	0.679
2017	1	1	8	0.679
2017	1	1	9	0.679
2017	1	1	10	0.679
2017	1	1	11	1.342
2017	1	1	12	1.342
2017	1	1	13	1.342
2017	1	1	14	1.342
2017	1	1	15	1.342
2017	1	1	16	1.342
2017	1	1	17	1.342
2017	1	1	18	1.342
2017	1	1	19	0.851
2017	1	1	20	0.851
2017	1	1	21	0.851
2017	1	1	22	0.851
2017	1	1	23	0.851
2017	1	2	0	0.851
2017	1	2	1	0.851
2017	1	2	2	0.851
2017	1	2	3	0.851

- Incorporates a new feature to activate or deactivate boundary receptors in CALPOST

Receptors

Options Discrete Receptors

Options

Buttons: Activate All, Activate Selection, Deactivate All, Deactivate Selection, Inverse All, Inverse Selection

Select receptors

Buttons: Activate Sensitive Receptors, Deactivate Sensitive Receptors, **Activate Boundary Receptors**, Deactivate Boundary Receptors

Receptor State Legend

Receptor OFF 0 (red box)

Receptor ON 1 (green box)

Receptors Table:

Attribute	State
1	1
2	1
3	1
4	1
5	1
6	1
7	1
8	1
9	1
10	1
11	1
12	1
13	1
14	1
15	1
16	1
17	1
18	1

Buttons: OK, Cancel, Help

- Adds an Output Summary file for the following list files:
 - TERREL and CTGPROC list file
 - READ62 list file
 - Coastline polygon file (to be used in CALPUFF)
 - Puff tracking file (available in CALPUFF Version 6.42)
- Adds default output units for certain source input units, such as mass units, odor units, and radiation units
- Enables the capability of importing boundary receptors from AERMOD files with .ami, .inp, and .dat extensions
- Replaces the sensitive receptor file with a CALPUFF control file in CALPOST so that the information is in one file rather than requiring both a sensitive receptor file and CALPUFF control file
- Allows 6 decimal places now rather than 4 decimal places when converting coordinates to Latitude and Longitude using the Coordinate Converter tool
- Improves the efficiency of generating modeling results for sensitive receptors in CALPOST

Bug Fixes

- Fixes a bug that previously imported an incorrect decay rate
- Fixes a bug that caused units to display incorrectly in the Table view when the radiation decay chemical mechanism is used
- Fixes a bug that used incorrect elevations for discrete receptors in the CALPOST result summary
- Fixes a bug that prevented secondary organic aerosols (SOA) species to be selected when the chemistry option is MCHM = 7

Known Issues

- If the run length average is longer than 9999 hours, then the run length average results cannot be shown in "Results Summary" since 9999 is the maximum supported number according to the CALPUFF Fortran code. The results can only be found in the .csl file.
- The CALPOST executable needs to be recompiled when MCHM = 5 or 7 and more than 20 species are selected in CALPUFF.