



Release Notes BREEZE AERMOD 8.0

BREEZE Software
+1 (972) 661-8881
breeze@trinityconsultants.com
breeze-software.com



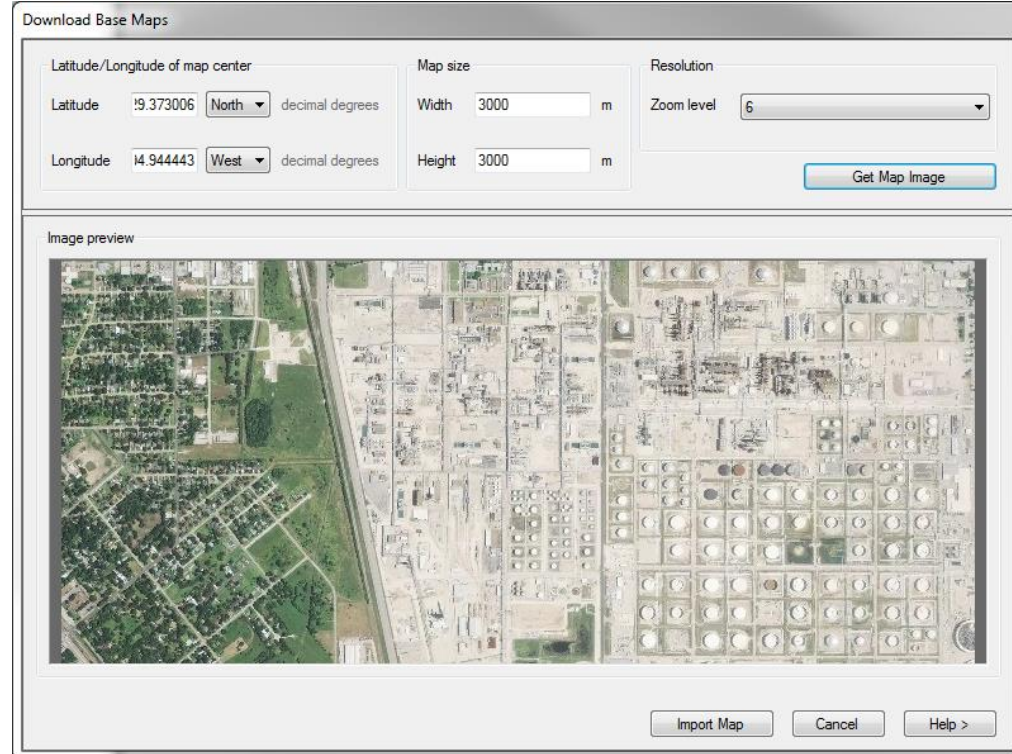
MAIND srl è distributore unico per l'Italia dei software di Trinity Consultants

BREEZE AERMOD 8.0 Release Notes

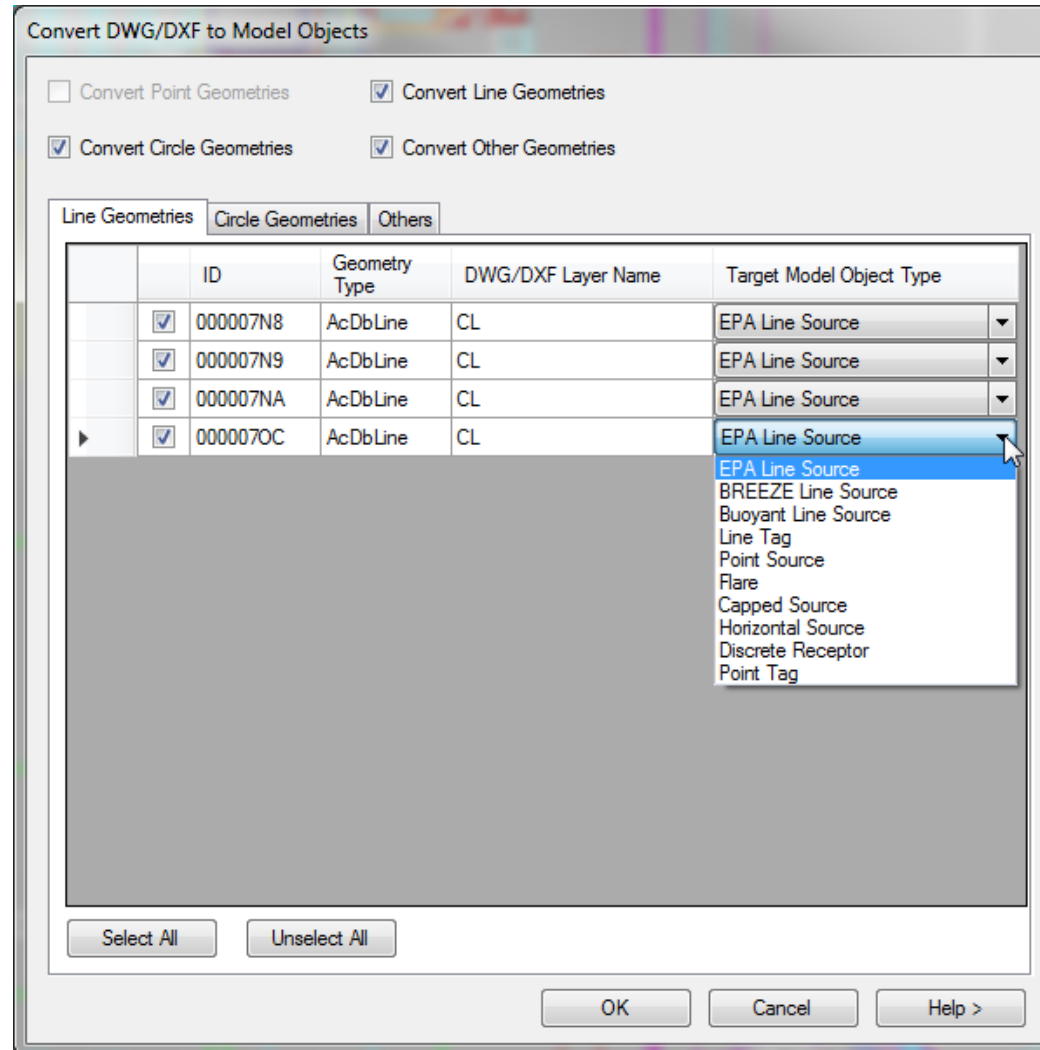
What's New in 8.0

New Features

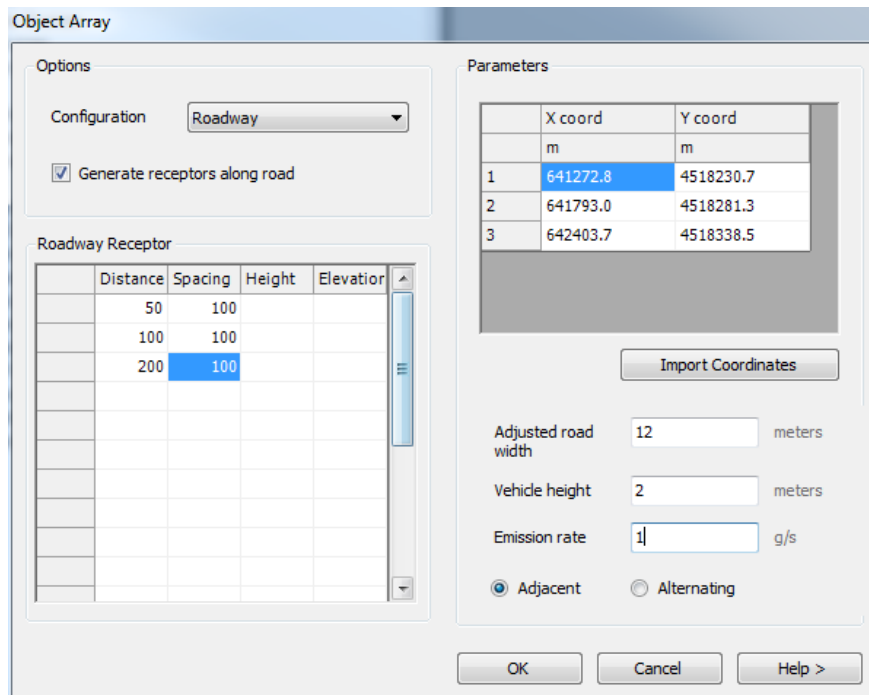
- Implements downloading of high-resolution base maps for any locations around the world. Using base maps in AERMOD runs can assure proper setup of model objects in the study domain and help better visualize results graphically.



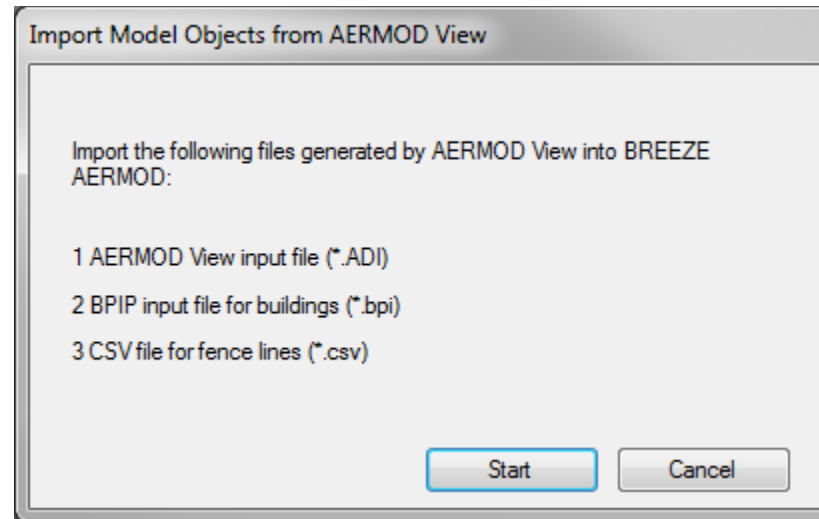
- Enables selecting and converting imported DWG/DXF objects to AERMOD model objects and buildings, thereby expediting the model setup process



- Facilitates automated generation of discrete receptor arrays around model objects (boundary fence lines, area sources with the exception of circular sources, EPA line sources, or roadway volume sources)



- Adds a source tool to simultaneously assign particle deposition parameters or gaseous deposition parameters to a group of sources
- Adds the capability to open AERMOD View control files (.ADI)
- Incorporates a feature to import and edit AERMOD View control files (.ADI), building files (.BPI) and fence line files (.csv)



- Allows source ID ranges to be read in input files
- Enables merging of multiple year meteorological files into one single file

Enhancements:

- Enhances the Object Array tool to automatically create an annotation point when adding gridded discrete receptors
- Streamlines importing base map images by bypassing the existing image base map world file
- Adds Included Objects (receptors and sources) to be displayed in the Data and Map Tab. Included Objects are available in the external files that can be called into BREEZE AERMOD.
- Streamlines the selection of multiple objects when panning over the map
- Enhances the implementation of the depletion option setup

Bug Fixes

- Fixed a bug that caused AERMOD to crash when loading a DEM file without datum information
- Fixed a bug that prevented discrete receptors from being selected in the Map Tab when they are adjacent to area sources
- Fixed a bug that prevented flare sources from being processed when using the BREEZE enhanced executable in Version 16216r
- Fixed a bug that interchanged the unit conversion factors of the Inches option and the User defined option when importing a DWG/DXF file
- Fixed a bug that prevented arc objects in AutoCAD files from being imported correctly
- Fixed a bug that caused scheduled model runs to not begin when using AERMOD parallel versions
- Fixed a bug that reset discrete receptor flagpole heights to the universal height as defined by AERMOD's flagpole control option after an AERMAP run

Known Issues

- When the multi-year option is enabled in the Control Options, subsequent years must be run immediately after prior years in order to properly read the output files.
- Some USB Hardware Keys (dongles) for licenses of AERMOD Parallel that were issued for use with AERMOD version 11103 and earlier executables will not be compatible with the most recent editions of the AERMOD Parallel and BREEZE AERMOD Parallel executables. These keys may need to be updated; please contact Support with related questions.
- When a number of one unit is converted to another unit, the total decimal places of the original number are retained for the converted number. This may result in reduced significant digits of the converted number and a loss of precision.