



Release Notes

BREEZE AERMOD 7.12.1

BREEZE Software
+1 (972) 661-8881
breeze@trinityconsultants.com
breeze-software.com



BREEZE AERMOD 7.12.1 Release Notes

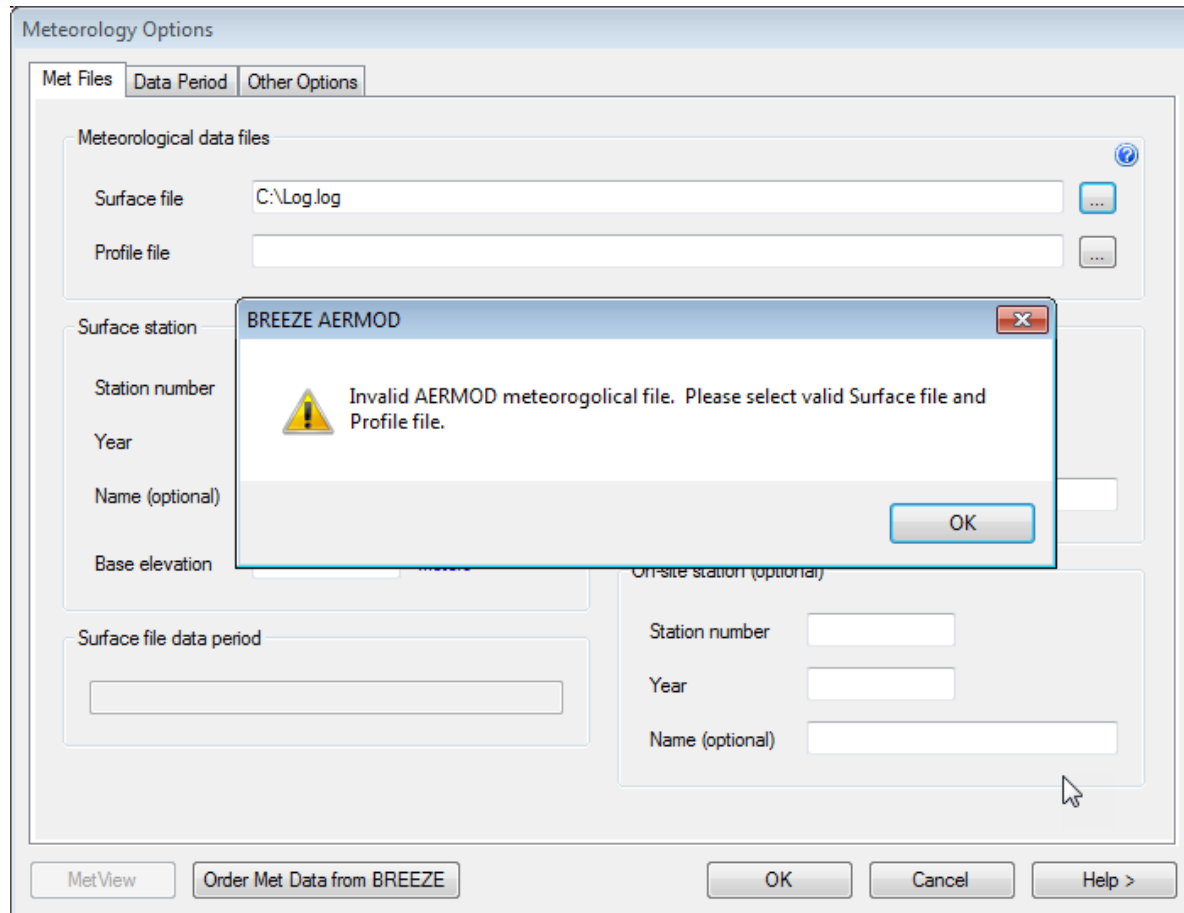
What's New in 7.12.1

- Enabled the high-speed parallel version of the latest US EPA AERMOD executable 16216r

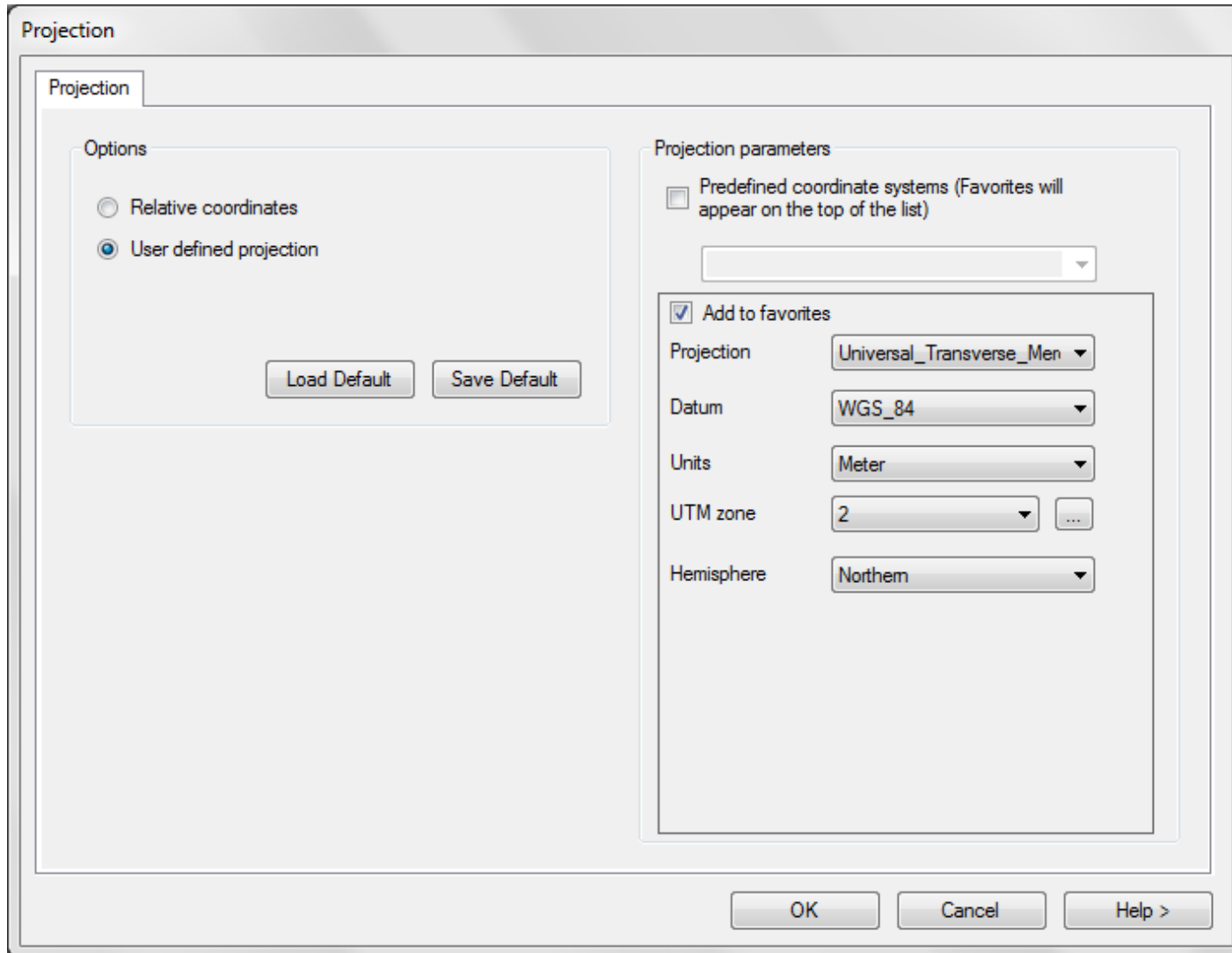
NOTE: There is a known bug in U.S. EPA AERMOD version 16216r that causes minor differences in results when the order of the receptors is changed. U.S. EPA's intensive evaluation hasn't demonstrated that there is any substantial impact on design values, although on some very specific hourly comparisons, larger differences have been seen. Due to this bug, running the BREEZE parallel version of 16216r can result in minor differences in results when compared with U.S. EPA AERMOD 16216r. U.S. EPA is planning to fix the bug in the next version, but there is currently no timeline for this fix. To expedite model runs in the meantime, the BREEZE parallel version has been released. A new parallel version will be released once U.S. EPA fixes the bug. Between now and then, please keep in mind that the results produced by the current 16216r parallel executable may slightly differ from those produced by the non-parallel (single core) U.S. EPA AERMOD 16216r executable. Furthermore, please keep in mind that the single core version of the AERMOD executable should be used for final runs submitted for regulatory purposes.

The screenshot shows the 'Control' panel of the BREEZE AERMOD software. It features three tabs: 'Main Options', 'Other Options', and 'Multi-year'. The 'Main Options' tab is active. Under 'Titles (2 lines)', there is a text box containing 'NO TITLE SPECIFIED'. The 'AERMOD executable' section has two rows of radio buttons: 'Use EPA' (selected) and 'Use BREEZE', each with a 'Use Parallel' checkbox. The 'Use Parallel' checkbox for 'Use BREEZE' is checked. The 'Version' section has a list of version numbers with radio buttons: '16216r (recommended)' (selected), '15181', '14134', '13350', '12345', '12060', '09292', and '07026'. A help icon is visible to the right of the version list.

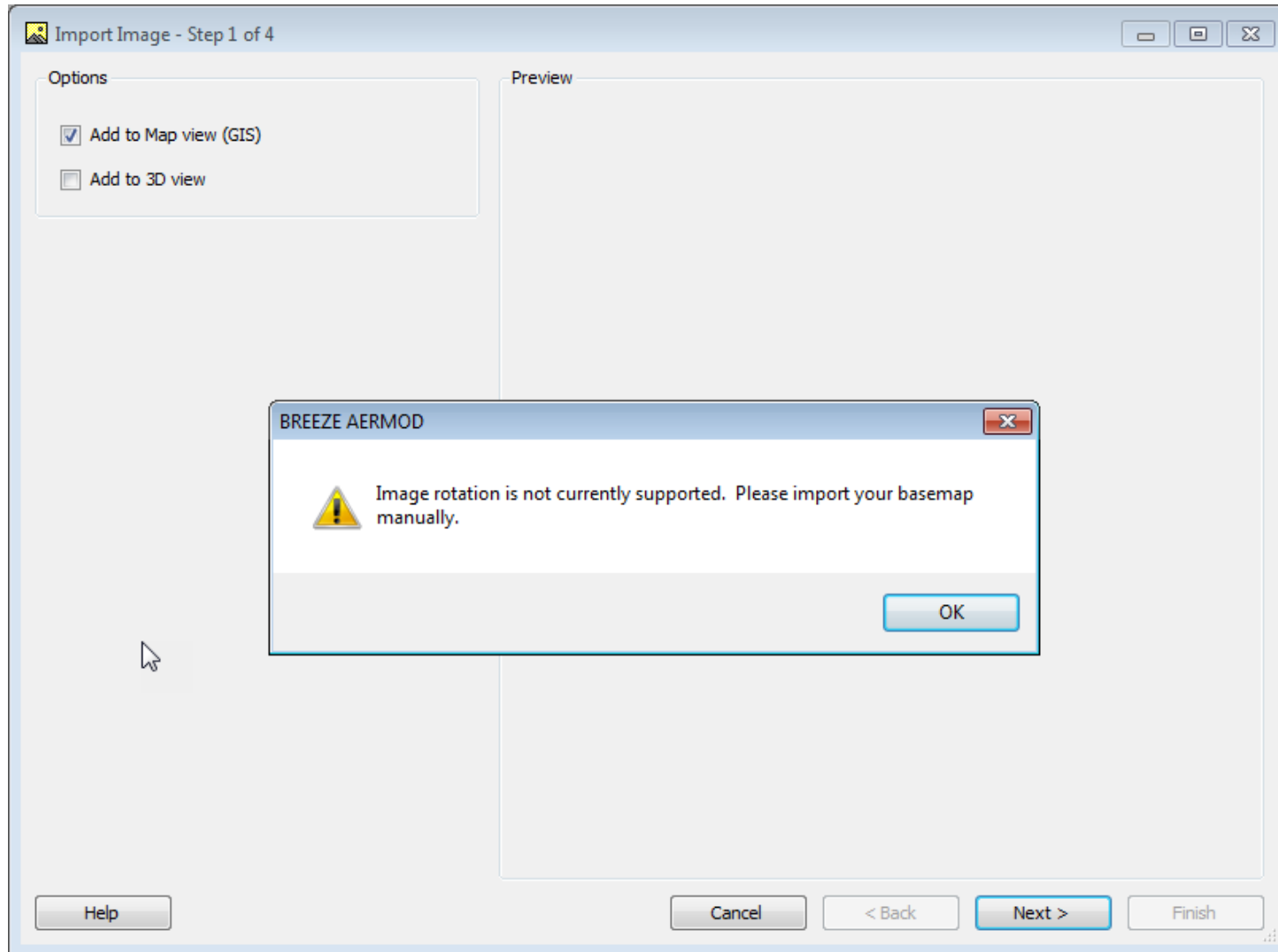
- Added the capability to extract basemaps from .AMZ file when they are not available in the indicated file paths
- Added a function to validate specified meteorological data files



- Added an option to enable users to set up favorite projections



- Added a warning message to display when the georeferenced file has rotation information



Bug Fixes

- Fixed a bug that displayed a wrong error message in the diagnostic panel when OLM/ARM2/PVMRM option is selected for NO₂ modeling in AERMOD version 16216r
- Fixed a bug that prevented the terrain boundary from displaying correctly when terrain DEM files are crossing the equator
- Fixed a bug that caused the event run to fail when the run is not executed immediately after the corresponding standard AERMOD run
- Fixed issues that prevented certain DWG/DXF files from loading properly
- Fixed a bug that caused model runs to fail under certain circumstances, such as scheduled runs, re-runs, or when the computer is locked
- Fixed a bug that added additional points for Uniform Cartesian Gridded Receptors
- Fixed a bug that caused model runs to fail when a restart file is used
- Fixed a bug that prevented AERMAP/BPIP from running properly

Known Issues

- When the multi-year option is enabled in the Control Options, subsequent years must be run immediately after prior years in order to properly read the output files.
- Some USB Hardware Keys (dongles) for multi-core licenses of AERMOD that were issued for use with the 11103 and earlier executables will not be compatible with the most recent editions of the AERMOD Parallel and BREEZE AERMOD Parallel executables. These keys may need to be updated; please contact Support with related questions.
- Some numbers (e.g., ones that have a low number of or no decimal places) may be carried out to a higher number of decimal places when converting between different units of measure in both the Data tab and the Sources form of the Project tab, resulting in a loss of precision.